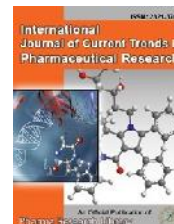




## International Journal of Current Trends in Pharmaceutical Research

Journal Home Page: [www.pharmaresearchlibrary.com/ijctpr](http://www.pharmaresearchlibrary.com/ijctpr)



Research Article

Open Access

### Analytical Method Development and Validation for the Simultaneous Estimation of Ezetamibe and Simvastatin by RP-HPLC Method in Bulk and Pharmaceutical Dosage Form

Y. Krishna Reddy<sup>1</sup>, Dr. P.M Patel<sup>2</sup>

<sup>1</sup>Associate Professor, Bomma Institute of Pharmacy, Khammam, Telangana, India

<sup>2</sup>Principal, Kalol Institute of Pharmacy, kalol, Gujarat, India

#### ABSTRACT

A new method was established for simultaneous estimation of Ezetamibe and Simvastatin by RP-HPLC method. The chromatographic conditions were successfully developed for the separation of Ezetamibe and Simvastatin by using Agilent C18 5 $\mu$ m (4.6\*250mm) column, flow rate was 1ml/min, mobile phase ratio was Methanol: ACN (70:30% v/v), detection wave length was 238nm. The instrument used was WATERS HPLC Auto Sampler, Separation module 2695, PDA Detector 996, Empower-software version-2. The retention times were found to be 2.443 mins and 2.918 mins. The % purity of Ezetamibe and Simvastatin was found to be 100.7% and 101.4% respectively. The system suitability parameters for Ezetamibe and Simvastatin such as theoretical plates and tailing factor were found to be 1.7, 2114.5 and 1.7, 2931.0 the resolution was found to be 8.0. The analytical method was validated according to ICH guidelines (ICH, Q2 (R1)). The linearity study for Ezetamibe and Simvastatin was found in concentration range of 1 $\mu$ g-5 $\mu$ g and 100 $\mu$ g-500 $\mu$ g and correlation coefficient ( $r^2$ ) was found to be 0.999 and 0.999, % mean recovery was found to be 100% and 100.5%, %RSD for repeatability was 2.0 and 2.0, % RSD for intermediate precision was 1.5 and 1.1 respectively. The precision study was precise, robust and repeatable. LOD value was 2.95 and 3.04, and LOQ value was 9.87 and 10 respectively. Hence the suggested RP-HPLC method can be used for routine analysis of Ezetamibe and Simvastatin in API and Pharmaceutical dosage form.

**Keywords:** Ezetamibe, Simvastatin, HPLC

#### ARTICLE INFO

##### CONTENTS

1. Introduction . . . . .	285
2. Materials and Methods . . . . .	285
3. Results and discussion . . . . .	286
4. Conclusion . . . . .	289
5. References . . . . .	289

**Article History:** Received 12 July 2016, Accepted 27 August 2016, Available Online 15 September 2016

##### \*Corresponding Author

Y. Krishna Reddy  
Associate Professor,  
Bomma Institute of Pharmacy,  
Khammam, Telangana, India  
Manuscript ID: IJCTPR3139



PAPER-QR CODE

**Citation:** Y. Krishna Reddy. Analytical Method Development and Validation for the Simultaneous Estimation of Sacubitril and Valsartan by the RP-HPLC Method in Bulk and Pharmaceutical Dosage Form. *Int. J. Currnt. Tren. Pharm, Res.*, 2016, 4(5): 284-290.

## 1. Introduction

### Analytical methods

Methods are developed for new products when no official methods are available. Alternate methods for existing (non-pharmacopoeial) products are developed to reduce the cost and time for better precision and ruggedness [1]. Trial runs are conducted, method is optimized and validated. When alternate method proposed is intended to replace the existing procedure comparative laboratory data including merit/demerits are made available [2].

### Description of the Various Analytical Methods

Titrimetric and gravimetric method of analysis is suitable when the sample is present in pure form or when no interference is observed in the mixture with other materials [3]. Ultraviolet and visible spectrometric method is suitable when no Interference is observed in the mixture [4,5]. HPLC and GC methods are more advantageous than the above due to their capability in separating organic mixtures and quantitative estimations. AAS is used mainly for quantitative estimation in ppm and ppb levels of elements. Infra-red spectroscopy though mainly used for qualitative analysis can be used for quantitative estimation also. Out of all the above methods, thin layer chromatography plays a very important role in analysis due to its adaptability, flexibility, and cost and time. It can be used both for qualitative and quantitative determination. After separation spots can be scanned with the help of a scanner and quantitative measurement can be made [6].

### Chromatography:

Chromatography is a technique used in analytical chemistry to separate and identify components of mixtures. The name comes from the Greek term for "color writing" because this method was originally used to separate colored samples. The advent of high-performance liquid chromatography (HPLC).in this system pressure is applied to the column, forcing the mobile phase through at much higher rate [7]. The pressure is applied using a pumping system. The action of the pump is critical, since it must not pulsate and mix up the sample being separated in the solvent, causing it to lose resolution [8]. Development of pumps has proceeded quite quickly over the last several years, and now it is possible to achieve good resolution under the conditions required for HPLC [9].

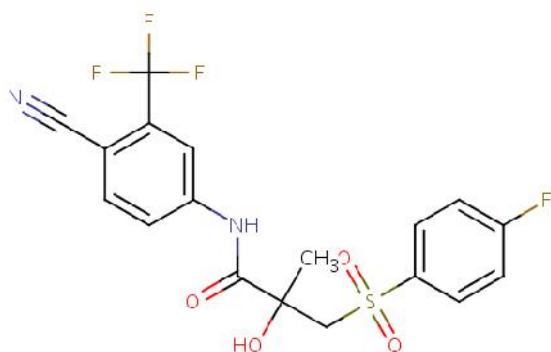


Figure 1: Ezetamibe

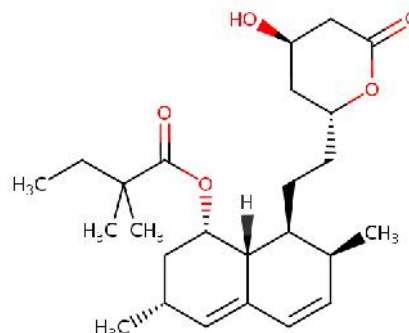


Figure 2: Simvastatin

## 2. Materials and Methods

### Apparatus:

The instrument used for the study was WATERS, software: Empower, 2695 separation module, PDA detector.

### Reagents and Materials:

The solvents used were Potassium dihydrogen orthophosphate, Methanol, Acetonitril and Water [10].

### Selection of detection wavelength:

10 mg of Ezetamibe and Simvastatin was dissolved in mobile phase. The solution was scanned from 200-400 nm the spectrum was obtained. The overlay spectrum was used for selection of wavelength for Ezetamibe and Simvastatin. The isobestic point was taken as detection wavelength [11].

### Selection of mobile phase

**Methanol:** ACN (70:30%v/v) has been selected as mobile phase. If any buffer selected buffer pH should be between 2 to 8. If the buffer pH is below 2 siloxane linkages are cleaved. If the buffer pH is above 8 dissolution of silica takes place. pH controls the elution properties by controlling the ionization characteristics. It also decreases the retention and improves separation [12]. Good Response, Area, Tailing factor, Resolution will be achieved.

### Optimization Chromatographic trials for Simultaneous Estimation of Ezetamibe and Simvastatin by RP-HPLC

#### Optimization chromatographic conditions

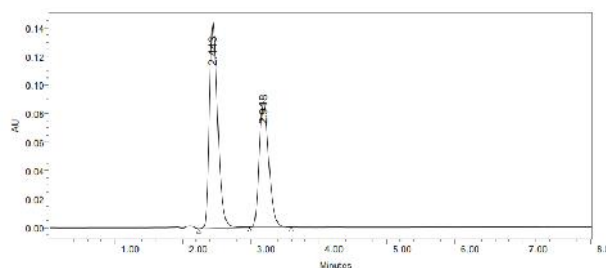


Figure 2: Optimization Chromatogram

Column : Agilent C18 5 $\mu$ m (4.6\*250mm)  
 Mobile phase ratio : Methanol : ACN(70:30%v/v)  
 Detection wavelength : 238nm

Flow rate : 1ml/min  
 Injection volume : 10µl Column  
 Temperature : Ambient

**Observation:**

The chromatogram is perfect with clear separation of components. The peak symmetry and system suitability parameters are within the limits. Hence this method is chosen as optimized one.

**Procedure**

**Preparation of mobile phase:**

A mixture of Methanol 700ml (70%), 300 mL of ACN (30%) are taken and degassed in ultrasonic water bath for 5 minutes. Then this solution is filtered through 0.45 µ filter under vacuum filtration [13].

**Standard Preparation:**

**Preparation of the individual Ezetamibe standard preparation:**

10mg of Ezetamibe working standard was accurately weighed and transferred into a 10ml clean dry volumetric flask and about 2ml of DMF is added. Then it is sonicated to dissolve it completely and made volume upto the mark with the diluant. (Stock solution). Further 10.0 ml from the above stock solution is pipette into a 100 ml volumetric flask and was diluted upto the mark with diluant.

**Preparation of the individual Simvastatin standard preparation:**

10mg of Simvastatin working standard was accurately weighed and transferred into a 10ml clean dry volumetric flask and about 2ml of DMF is added. Then it is sonicated to dissolve it completely and made volume upto the mark with the diluant. (Stock solution). Further 10.0 ml from the above stock solution is pipette into a 100 ml volumetric flask and was diluted upto the mark with diluant [14].

**Preparation of Sample Solution :( Tablet)**

Accurately 10 tablets are weighed and crushed in mortar and pestle and weight equivalent to 10 mg of Simvastatin and Ezetamibe (marketed formulation) sample into a 10mL clean dry volumetric flask and about 7mL of Diluents is added and sonicated to dissolve it completely and made volume upto the mark with the same solvent[15]. (Stock solution) Further 3 ml of above stock solution was pipetted into a10ml volumetric flask and diluted upto the mark with diluant.

**3. Results and discussions**

**Method Validation Parameters**

**1. Specificity:**

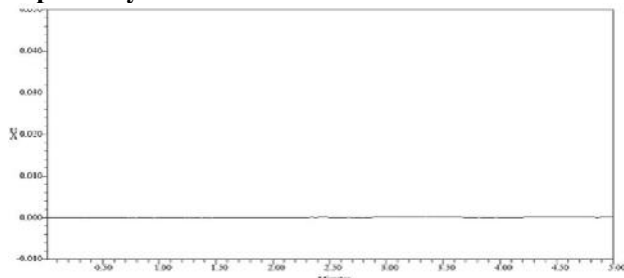


Figure 3: Chromatogram of Blank

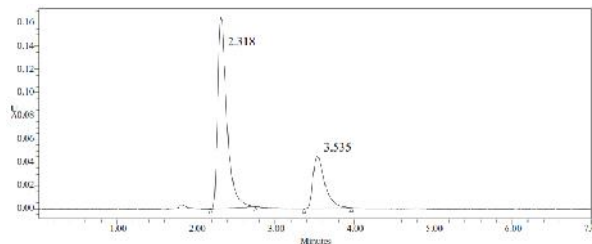


Figure 4: Chromatogram of Sample

The system suitability for specificity was carried out to determine whether there is any interference of any impurities in retention time of analytical peak. The specificity was performed by injecting blank [16].

**2. Linearity**

The linearity study was performed for the concentration of 100ppm to 500ppm and 1ppm to 5ppm level. Each level was injected into chromatographic system. The area of each level was used for calculation of correlation coefficient.

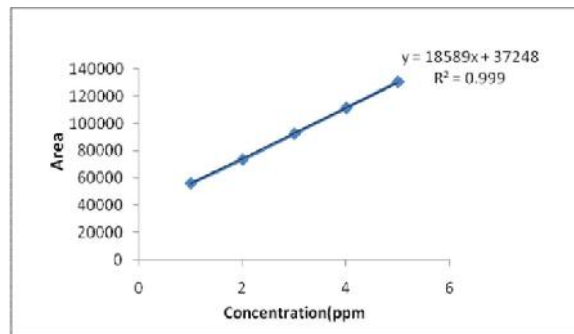


Figure 5: Calibration graph of Ezetimibe

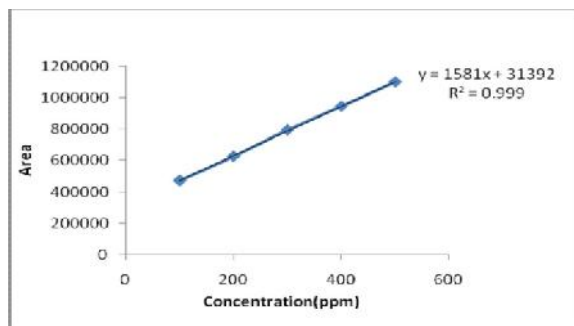


Figure 6: Calibration graph of Simvastatin

**Acceptance criteria:** Correlation coefficient should be not less than 0.999.

**3. Range**

The linearity study was performed for concentration range of 1µg -5µg and 100µg-500µg of Ezetamibe and Simvastatin and the correlation coefficient was found to be 0.999.

**4. Accuracy**

Accuracy of the method was determined by recovery experiments. There are mainly 2types of recovery studies are there [17].

**Standard addition method:**

To the formulation, the reference standard of the respective drug of known concentration was added, analyzed by HPLC and compared with the standard drug concentration [18]. Percentage method: For these assay method samples

are prepared in three concentrations of 50%, 100%, and 150% respectively.

Acceptance criteria: The mean % recovery of the Ezetimibe and Simvastatin at each level should be not less than 95.0% and not more than 105.0%.

### 5. Precision

The precision of the method was demonstrated by intra-day and inter-day precision studies. Intra-day studies were performed by injecting three (3) repeated injections within a day. Peak area and %RSD were calculated and reported.

The chromatograms of intra-day precision studies were shown. Inter-day precision studies, was done by injecting three (3) repeated injections for three consecutive days. Peak area and %RSD were calculated and reported [19].

### Repeatability:

#### Preparation of standard stock solution:

Accurately 10 mg of Simvastatin and 10mg of Ezetimibe working standard were weighed and transferred into a 10mL and 100ml of clean dry volumetric flasks and about 7mL and 70ml of Diluant was added and sonicated to dissolve it completely and made volume up to the mark

with the same solvent [20]. (Stock solution) Further it was pipette (0.3ml and 0.3ml) into a 10ml volumetric flask and diluted up to the mark with diluents.

### Procedure:

The standard solution was injected for five times and the areas for all five injections in HPLC were measured. The %RSD for the area of five replicate injections was found to be within the specified limits [21].

### Acceptance criteria

The % RSD for the area of five standard injections results should not be more than 2.

### Intermediate Precision (Ruggedness):

To evaluate the intermediate precision (also known as ruggedness) of the method, precision was performed on different days by using different make column of same dimensions [22].

**Detection Limit:** The LOD was performed for Ezetimibe and Simvastatin was found to be 2.95 and 3.04 respectively.

### Quantitation Limit:

The LOQ was performed for Metformin and Gemigliptin was found to be 9.87 & 10 respectively.

**Table 1:** Linearity Results

	PeakName	RT	Area	Height
1	Simvastatin	2.297	869216	109198
2	Simvastatin	2.264	1148093	145069
3	Simvastatin	2.308	1398858	164962
4	Simvastatin	2.370	1676584	193291
5	Simvastatin	2.322	1936686	238262
6	Bicalutamide	3.458	296156	30269
7	Bicalutamide	3.351	371946	39434
8	Bicalutamide	3.488	452984	45638
9	Bicalutamide	3.712	537383	50538
10	Bicalutamide	3.535	617463	65483

**Table 2:** Accuracy results for Ezetimibe

% Concentration (at specification)	Area	Amount added(m)	Amount found(m)	% Recovery	Mean Recovery
50%	702873	5	5.10	101.8%	100.5%
100%	1390018	10	9.99	99.9%	
150%	2206281	15	14.9	99.1%	

**Table 3:** Accuracy (recovery) data for Simvastatin

%Concentration (at specification level)	Area	Amount Added(mg)	Amount Found(mg)	% Recovery	Mean Recovery
50%	239401	5	5.0	101.3%	100.0%
100%	480779	10	9.94	99.4%	
150%	733144	15	14.8	99.2%	

**Table 4:** System suitability results For Simvastatin (Flow rate)

S.No	Flow Rate(ml/min)	System suitability results	
		USP Plate count	USP Tailing
1	0.8	3536	1.7
2	1.0	2931	1.7
3	1.2	2713	1.7

**Table 5:** System suitability results for Ezetamibe (Flow rate)

S.No	Flow Rate(ml/min)	System suitability results	
		USP Plate count	USP Tailing
1	0.8	2158	1.8
2	1.0	2114	1.7
3	1.2	2069	1.7

**Table 6:** Repeatability results of Simvastatin

	Peak name	RT	Area
1	Simvastatin	2.282	1313235
2	Simvastatin	2.312	1326776
3	Simvastatin	2.344	1347962
4	Simvastatin	2.351	1368872
5	Simvastatin	2.358	1363598
	Mean		1344089
	Std.dev		21267.38
	%RSD		1.58229

**Table 7:** Repeatability results of Ezetamibe

	Peak name	RT	Area
1	Ezetamibe	3.433	46160
2	Ezetamibe	3.557	45294
3	Ezetamibe	3.623	44163
4	Ezetamibe	3.639	44079
5	Ezetamibe	3.704	43930
	Mean		44725.2
	Std.dev		865.8142
	%RSD		1.935853

**Table 8:** Ruggedness results of Simvastatin

	Peak name	RT	Area
--	-----------	----	------

1	Simvastatin	2.381	1366825
2	Simvastatin	2.382	1379095
3	Simvastatin	2.384	1375825
4	Simvastatin	2.395	1364299
5	Simvastatin	2.412	1395271
6	Simvastatin	2.590	1393763
Mean			1379180
Std.dev			11950.85
%RSD			0.866519

**Table 9:** Ruggedness results of Ezetimibe

	Peak name	RT	Area
1	Ezetamibe	3.784	484545
2	Ezetamibe	3.797	484511
3	Ezetamibe	3.803	480804
4	Ezetamibe	3.845	485023
5	Ezetamibe	3.915	504952
6	Ezetamibe	4.607	485203
Mean			487506.2
Std.dev			7942.0
%RSD			1.6

#### 4. Conclusion

High performance liquid chromatography is at present one of the most sophisticated tool of the analysis. A new method was established for simultaneous estimation of Ezetimibe and Simvastatin by RP-HPLC method. The chromatographic conditions successfully developed for the separation of Ezetimibe and Simvastatin by using Agilent C18 5 $\mu$ m (4.6\*250mm) column, flow rate was 1ml/min, mobile phase ratio was Methanol: ACN (70:30% v/v), detection wave length was 238nm. The instrument used was WATERS HPLC Auto Sampler, Separation module 2695, PDA Detector 996, Empower-software version-2. The retention times were found to be 2.443 mins and 2.918 mins. The % purity of Ezetimibe and Simvastatin was found to be 100.7% and 101.4% respectively. The system suitability parameters for Ezetimibe and Simvastatin such as theoretical plates and tailing factor were found to be 1.7, 2114.5 and 1.7, 2931.0 the resolution was found to be International Journal of Current Trends in Pharmaceutical Research

8.0. The analytical method was validated according to ICH guidelines (ICH, Q2 (R1)). The linearity study for Ezetimibe and Simvastatin was found in concentration range of 1 $\mu$ g-5 $\mu$ g and 100 $\mu$ g-500 $\mu$ g and correlation coefficient ( $r^2$ ) was found to be 0.999 and 0.999, % mean recovery was found to be 100% and 100.5%, %RSD for repeatability was 2.0 and 2.0, % RSD for intermediate precision was 1.5 and 1.1 respectively. The precision study was precise, robust and repeatable. LOD value was 2.95 and 3.04, and LOQ value was 9.87 and 10 respectively. Hence the suggested RP-HPLC method can be used for routine analysis of Ezetimibe and Simvastatin in API and Pharmaceutical dosage form.

#### 5. References

- [1] G.R. Chatwal, S.K. Anand, Text book of

- Instrumental Methods of Chemical Analysis, Himalaya Publishing House, 5<sup>th</sup> Ed, 2002, p.2.566-2.570.
- [2] G.W.Ewing, Text book of Instrumental Methods of Chemical Analysis, Mc Graw-Hill Book Company, 5th Ed, p.375-385.
- [3] B.K. Sharma, Textbook of Instrumental Methods of Chemical Analysis, GOEL publishing house, Meerut, 23<sup>th</sup> Ed, p.288-289.
- [4] G.Vidyasagar, Textbook of Instrumental Methods of Drug Analysis, Pharmamed Press, 2009, p.106-120.
- [5] H. H Willard, L. L Merritt, J. A Dean, F. A Settle, Textbook of Instrumental Methods of Analysis, CBS publishers and distributors, New Delhi, 7<sup>th</sup> Ed, 1986, p.592-596.
- [6] H.H.Tackett, J.A.Cripe, G.Dyson, Positive displacement reciprocating pump fundamentals-power and direct acting types, Proceedings of the twenty-fourth international pump user's symposium, 2008, p.45-58.
- [7] D.A.Skoog, F.J.Holler, S.R.Crouch, Textbook of Instrumental Analysis, Brooks/Cole, Cengage Learning India Private Limited, 2007, p.900-906.
- [8] R. E. Schirmer, Textbook of Modern Methods of Pharmaceuticals, CRC press, 2<sup>nd</sup> Ed, P.242-244.
- [9] LR.Snyder, JJ Kirkland, LG.Joseph, Practical HPLC Method Development, Wiley Inter Science, New York, 2<sup>nd</sup> Ed, 1997, p. 1-56.
- [10] Ranjith singh, HPLC Method Development and Validation- an Overview, *J Pharm. Educ. Res.* 4 (2013) 26-33.
- [11] ICH: Q2B, Analytical Validation – Methodology (1996)
- [12] Chandanam Sreedhar, Sowmya Manala, Sreenivasa Rao T, Anusha Vemuri, Naresh kumar et al, Development And Validation Of Rp-Hplc Method For The Estimation Of Bicalutamide In Pure And Pharmaceutical Dosage Forms. *International Journal of PharmTech Research*, Vol.4, No.4, pp 1686-1690.
- [13] Pandya, Chirag B.; Channabasavaraj, K. P.; Chudasama, Jaydeep D.; Mani, T. T. et al, Development And Validation Of Rp-Hplc Method For Determination Of Rosuvastatin Calcium In Bulk And Pharmaceutical Dosage Form. *International Journal of Pharmaceutical Sciences Review & Resear*; Nov 2010, Vol. 5 Issue 1, p82
- [14] Suddhasattya Dey, Anjan De, Sudip Mondal, Prasanna Kumar Pradhan, Chilka Patel, Shreya Shah and Bhavini Lad et al, Development And Validation of RP-HPLC Method For The Estimation of Simvastatin In Bulk And Pharmaceutical Dosage Form. *Indian American journal of pharmaceutical reaserch*.
- [15] Nalini Kanta Sahoo, Madhusmita Sahu, P. Srinivasa Rao 1 , R.S.Vineela , J.N.V. Indira Devi , N.Sandhya Rani , Goutam Ghosh et al, Validation of Assay Indicating Method Development of Simvastatin in Bulk and its Tablet Dosage form by RP-HPLC. *Journal of Applied Pharmaceutical Science* Vol. 4 (01), pp. 117-122, January, 2014.
- [16] Sreelakshmy, N.; Jayalakshmi, B.; Ramesh, J.; Vijay Amirtharaj, R. et al, A simultaneous method development and validation of Ezetimibe and Simvastatin in combined dosage form by RP-HPLC method. *Journal of Pharmacy Research*; Apr 2011, Vol. 4 Issue 4, p1127
- [17] L. Narasimha Rao Vemula, N. Tamilselvi, R. Krishnan Et Al, A Validated Rp-Hplc Method For Simultaneous Estimation Of Sitagliptin And Simvastatin In Tablet Dosage Form. *International Journal of Pharmacy and Pharmaceutical Sciences*, Vol 5, Suppl 2, 2013.
- [18] G.Krishnaveni ,P.V.V. Sathyannarayana et al, Method Development And Validation For Simultaneous Determination Of Ezetimibe And Simvastatin In Combined Pharmaceutical Dosage Form By Rp-Hplc Method. *International Journal of Pharmaceutical and Life Sciences*. Volume 2, Issue 2: March 2013.
- [19] R. P. Dixit, C. R. Barhate, S. G. Padhye, C. L. Viswanathan, and M. S. Nagarsenker et al, Stability Indicating RP-HPLC Method for Simultaneous Determination of Simvastatin and Ezetimibe from Tablet Dosage Form. *Indian J Pharm Sci.* 2010 Mar-Apr; 72(2): 204–210.
- [20] N.Nagi Reddy, J.Venkateshwar Rao Et Al, Stability Indicating Method Development And Validation For The Determination Of Ezetimibe & Simvastatin In Tablet Dosage Form By Rp-Hplc. *International Journal Of Pharmaceutical Research And Biomedical Analysis*. | April-June 2012| Volume 1 | Issue 1 | 32-41
- [21] Sheetal Sharma, Nimita Manocha Et Al, Estimation Of Sitagliptin Phosphate And Simvastatin And Validation Of The Proposed Method In A Combined Marketed Tablet Dosage Form By Simultaneous Equation Method. *International Journal of Current Pharmaceutical Research*, Vol 4, Issue 3, 2012.