



Research Article

International Journal of Chemistry and Pharmaceutical Sciences

www.pharmaresearchlibrary.com/ijcps



Stability Study of Herbal Drug

*Dilip B. Satpute and Shirish S. Pingale

Abasaheb Garware College, Pune 4 (Affiliated to University of Pune), India

P.G. Department of Chemistry, Gramonnati Mandal's Arts, Com. & Sci. College, Narayangaon, Pune-410504
(Affiliated to University of Pune), India.

Abstract

The stability is aimed at assuring that the drug/drug product remains within specifications established to ensure its identity, strength, quality and purity. It can be interpreted as length of time under specific conditions and storage that a product will remain within the pre-defined limits for all its important characteristics. Each ingredient, whether therapeutically active or inactive, in a dosage form can affect stability. Environmental factors such as temperature, light, air (specifically oxygen, carbon dioxide and water vapours) and humidity can affect stability. Similarly, such factors as particle size, pH, the properties of water and other solvents employed the nature of container and the presence of other chemicals resulting from contamination or from the intentional mixing of different products can influence stability. From observations of CHNS analysis, TGA, DTG, DSC technique and HPTLC analysis of samples it was found that Alupoly is a good container closure for to store Root Bark Powder of *Argemone mexicana* L. The phytochemical corresponding to R_f -value 0.05 of Root Bark Powder of *Argemone mexicana* L. is stable at control temperature in alupoly and HDPE container closure. These results clearly indicate that there was no change in phytochemicals at accelerated conditions.

Keywords: liver tonic, ingredients, TGA, DSC, HPTLC, pH

Contents

1. Introduction	603
2. Experimental	604
3. Conclusion	605
4. References	605

*Corresponding author

Dilip B. Satpute

E-mail: dilipsatpute@yahoo.com

MS. ID: PRL2014-IJCPS1956



PAPER-QR CODE

© 2013, IJCPS All Rights Reserved

1. Introduction

Historically there has always been evidence of concern on the part of pharmaceutical practitioners and the pharmacist, that the drug during development and in the dispensed dosage form be stable. In early twentieth century in-compatibilities between drugs and excipients were quite obvious because of their interactions (e.g. aspirin and magnesium stearate which resulted in acetic acid). This was because formulation development was in its nascent stage. Quantitation was another issue, since the first half of the twentieth century quantitation of assays for such problems relied on some colour reactions and a colorimeter. The introduction of spectrophotometer on a commercial scale was a giant step forward in fifties and sixties, but specificity as still lacking. Such specificity was accomplished in a semi-quantitative manner by thin layer chromatography (TLC), since quite good separations were achieved by this method. Later quantitation by TLC was also achieved due to technological improvements. It was high performance liquid chromatography (HPLC), which proved to be suitable for detection of small amounts of impurities and decomposition products. *Argemone mexicana* is an erect, prickly, annual herb, in India it is

introduced and naturalized and occur as wasteland weed in almost every part of India. The plant (sap) is used as an antidote to snake bite; in skin diseases, scabies, in eye infections and corneal ulcers. The plant and the root also find use as a diuretic, purgative, laxative, expectorant, for application on wounds; in skin diseases. The root bark powder of *Argemone mexicana* is used a good hepatoprotectant as it repairs liver dysfunction.

Storage Conditions

The length of the studies and the storage conditions should be sufficient to cover storage, shipment and subsequent use. Application of the same storage conditions as tested on the drug product will facilitate comparative review and assessment. Other storage conditions are allowable if justified. These are Temperature, Humidity, Accelerated conditions, Expiry Date etc.

2. Experimental

The whole plant powder of root bark of *Argemone mexicana* was used for the stability studies. The changes in the quality of the product may occur due to the interactions between the formulated biotechnological / biological product and container / closure, which determine the effects of the container / closure on product quality. Generally, the herbal products or formulations are packed in:

1. Airtight aluminium foil coated inside with good quality polyethylene layer.
2. High-density polyethylene container.
3. Glass bottles with rubber cork.
4. Sealed plastic bags (transparent).

The plant powder was packed in two sets of the above-mentioned containers. One set of containers was kept in an incubator maintained at storage temperature i.e. $25\text{ }^{\circ}\text{C} \pm 2\text{ }^{\circ}\text{C} / 60\% \text{ RH} \pm 5\%$. This served as control sample. Another set of containers was kept in an oven maintained at accelerated temperature i.e. $40\text{ }^{\circ}\text{C} \pm 2\text{ }^{\circ}\text{C} / 75\% \text{ RH} \pm 5\%$. The samples were removed from both control and accelerated storage temperature conditions. These samples were analysed by HPTLC for their phytochemical content, at zero days, one, two and three months. The samples in different containers were extracted as per the sample preparation procedure explained in the section HPTLC fingerprint of *Argemone mexicana* L. Toluene and Ethyl acetate in the volume ratio of 8 : 2 respectively, was the best solvent system for optimum resolution of the phytochemical constituents obtained in the plant extract Marker (root bark powder).

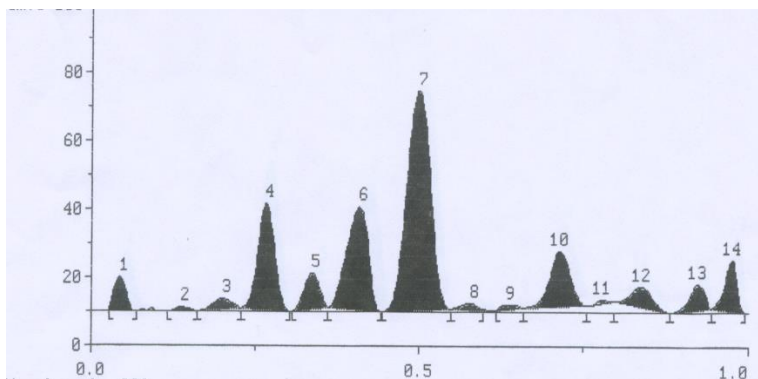


Fig.1 Typical HPTLC Chromatogram for Root Bark powder of *A. Mexicana*

Table.1 Details of HPTLC Chromatogram Figure-1

Peak No.	Rf	Area Under The Peak	%
1	0.05	144.4	3.08
2	0.14	20.8	0.44
3	0.20	66.9	1.43
4	0.27	630.4	13.46
5	0.34	193.7	4.14
6	0.41	790.7	16.88
7	0.50	1849.6	39.49
8	0.58	35.4	0.76
9	0.63	28.4	0.61
10	0.71	403.4	8.61
11	0.78	15.1	0.32
12	0.84	153.9	3.29
13	0.92	136.1	2.91
14	0.98	215.1	4.59

The 7th peak at R_f value 0.5 was selected for the stability study, as that is the major phytochemical constituent as seen from the figure 1 which shows maximum area under the curve.

The Chromatographic Parameters used are as follows

Parameter	Description
Stationary Phase	: HPTLC Silica gel 60 F ₂₅₄ Pre-coated Plates.
Solvent	: Methanol.
Spotting Volume	: 6 and 8 micro-litre.
Mobile Phase	: Toluene-Ethyl acetate (8:2)
Developing Mode	: CAMAG Twin Trough Chamber.
Sample applicator	: CAMAG LINOMATE IV.
Scanning Mode	: CAMAG TLC SCANNER II equipped with Cats 3.0 version software.
Lamp	: Deuterium.
Wavelength	: 336 nm (UV).

3. Conclusion

Alupoly is a good container closure for Root Bark Powder of *Argemone mexicana* L. The major phytochemical corresponding to R_f-value around 0.05 of Root Bark Powder of *Argemone mexicana* L. was found to be more stable at accelerated temperature as compared to with control temperature, for all container closures. The root bark powder shows stability with reference to phytoconstituents up to three years as the pattern of peaks is found to be constant.

4. References

1. Jens T. Cartensen. Drug Stability-Principles and Practices, Marcel Dekker Inc. New York, 2nd edition, (1994), Chapter 1, 1- 18.
2. Satinder Ahuja, Impurities evaluation of Pharmaceuticals, Marcel Dekker Inc. New York, 167 - 192.
3. ICH Guidelines: Stability testing of New Drug Substances and Products, 27th October 1993.
4. United States Pharmacopoeia, 24 NF (19), the United States Pharmacopoeia Convention Inc. USA, (2000).